

FuGENE® HD Transfection Reagent

Quick Transfection Protocol

Preparing the FuGENE®HD Transfection Reagent

Before use, allow FuGENE®HD Transfection Reagent, DNA, and diluent reach room temperature.

General Transfection Protocol

1. The day before transfection plate adherent cells in the amount that by the time of transfection will grow to approximately 80% confluence. For most common cell types plating 10,000 cells per well in 100µl of medium in 96-well flat bottom culture plate overnight will achieve proper density.

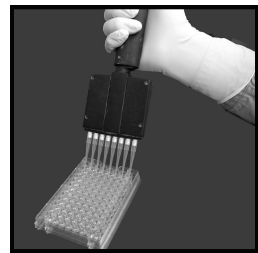
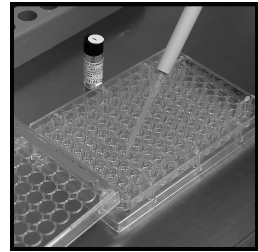
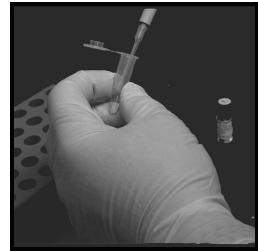
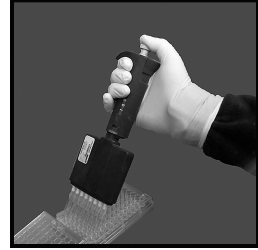
2. Add 100µl of 0.02µg/µl DNA solution in Opti-MEM I medium to a sterile tube or U- or V-bottom plate. For a 3:1 FuGENE®HD Transfection Reagent:DNA ratio, add 6µl of FuGENE®HD Transfection Reagent directly to the DNA solution, and mix immediately. For other ratios, consult **Table 1**.

Note: Avoid contact of undiluted FuGENE®HD Transfection Reagent with the sides of the tube or plate.

3. Incubate the FuGENE®HD Transfection Reagent/DNA mixture for 0–15 minutes at room temperature.

4. Add 2–10µl of the FuGENE®HD Transfection Reagent/DNA mixture per well to a 96-well plate containing cells in 100µl of growth medium. Mix by pipetting or using a plate shaker.

5. Incubate cells and evaluate transfection results. After transfection, incubate cells for 18-72 hours and measure your particular protein expression using appropriate detection method.



For complete protocol and transfection optimization information refer to FuGENE®HD Technical Manual, available online at: www.fugenehd.com/technical-manual/
For a list of conditions that have been used to transfect various cell types, visit: www.fugenehd.com/reference-material/

© 2015 Fugent LLC. All Rights Reserved. Printed in USA. 03/15.

ORDERING/ TECHNICAL INFORMATION:

www.fugenehd.com • Phone 608-215-4449 • Fax 608-241-7775

FuGENE is a registered trademark of Fugent, LLC., USA.

Table 1

Ratio of FuGENE®HD Transfection Reagent to DNA	0.02mg/ml DNA solution	FuGENE®HD
1.5:1	100µl	3 µl
2:1	100µl	4 µl
2.5:1	100µl	5µl
3:1	100µl	6 µl
3.5:1	100µl	7 µl
4:1	100µl	8 µl